

**SOX2 Antibody (Center)**  
**Affinity Purified Rabbit Polyclonal Antibody (Pab)**  
**Catalog # AP2048c****Specification**

---

**SOX2 Antibody (Center) - Product Information**

Application	IF, FC, WB,E
Primary Accession	<a href="#">P48431</a>
Other Accession	<a href="#">Q6EJB7</a> , <a href="#">Q42569</a> , <a href="#">P48432</a> , <a href="#">Q6P0E1</a> , <a href="#">P48430</a> , <a href="#">Q2PG84</a> , <a href="#">P53783</a> , <a href="#">Q00570</a> , <a href="#">Q57401</a> , <a href="#">Q2Z1R2</a> , <a href="#">Q6DGL6</a> , <a href="#">P54231</a>
Reactivity	Human
Predicted	Zebrafish, Chicken, Mouse, Xenopus, Sheep
Host	Rabbit
Clonality	Polyclonal
Isotype	Rabbit IgG
Calculated MW	34310
Antigen Region	89-119

**SOX2 Antibody (Center) - Additional Information****Gene ID** 6657**Other Names**

Transcription factor SOX-2, SOX2

**Target/Specificity**

This SOX2 antibody is generated from rabbits immunized with a KLH conjugated synthetic peptide between 89-119 amino acids from the Central region of human SOX2.

**Dilution**

IF~~1:10~50  
FC~~1:10~50  
WB~~1:4000  
E~~Use at an assay dependent concentration.

**Format**

Purified polyclonal antibody supplied in PBS with 0.09% (W/V) sodium azide. This antibody is purified through a protein A column, followed by peptide affinity purification.

**Storage**

Maintain refrigerated at 2-8°C for up to 2 weeks. For long term storage store at -20°C in small aliquots to prevent freeze-thaw cycles.

**Precautions**

SOX2 Antibody (Center) is for research use only and not for use in diagnostic or therapeutic procedures.

## SOX2 Antibody (Center) - Protein Information

### Name SOX2

**Function** Transcription factor that forms a trimeric complex with OCT4 on DNA and controls the expression of a number of genes involved in embryonic development such as YES1, FGF4, UTF1 and ZFP206 (By similarity). Binds to the proximal enhancer region of NANOG (By similarity). Critical for early embryogenesis and for embryonic stem cell pluripotency (PubMed:[18035408](#)). Downstream SRRT target that mediates the promotion of neural stem cell self-renewal (By similarity). Keeps neural cells undifferentiated by counteracting the activity of proneural proteins and suppresses neuronal differentiation (By similarity). May function as a switch in neuronal development (By similarity).

### Cellular Location

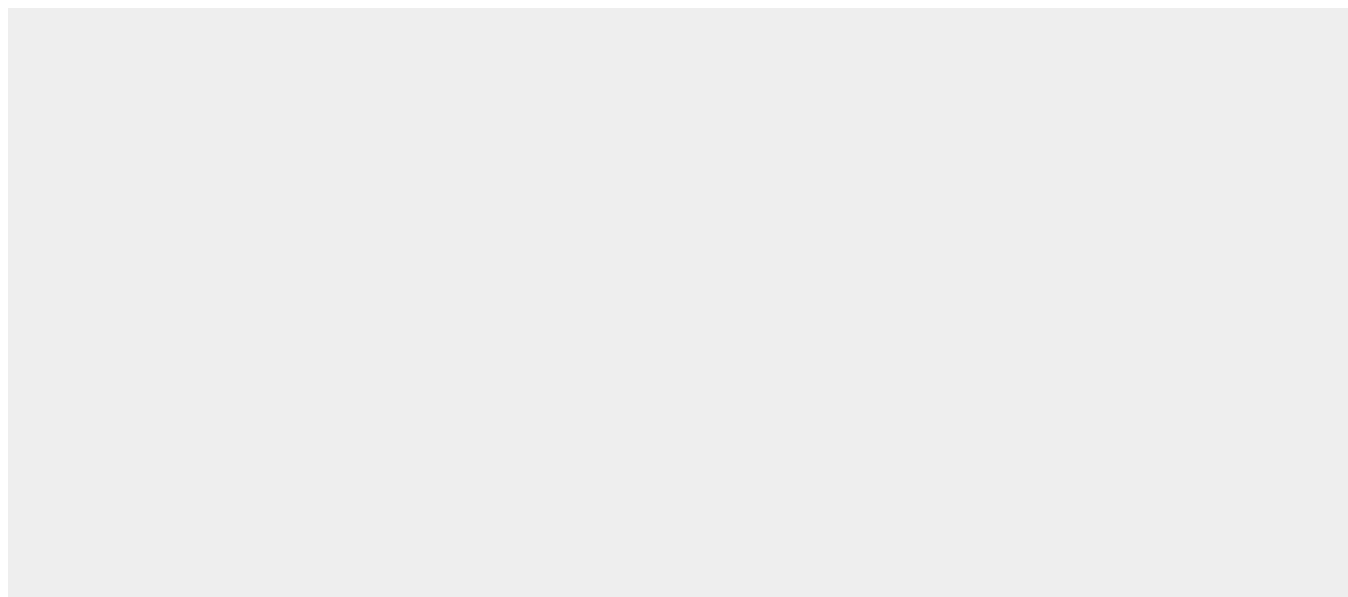
Nucleus speckle {ECO:0000250|UniProtKB:Q05066}. Cytoplasm {ECO:0000250|UniProtKB:Q05738}. Nucleus {ECO:0000250|UniProtKB:Q05738}. Note=Acetylation contributes to its nuclear localization and deacetylation by HDAC3 induces a cytoplasmic delocalization (By similarity). Colocalizes in the nucleus with ZNF208 isoform KRAB-O and tyrosine hydroxylase (TH) (By similarity) Colocalizes with SOX6 in speckles. Colocalizes with CAML in the nucleus (By similarity). Nuclear import is facilitated by XPO4, a protein that usually acts as a nuclear export signal receptor (By similarity) {ECO:0000250|UniProtKB:Q05066, ECO:0000250|UniProtKB:Q05738}

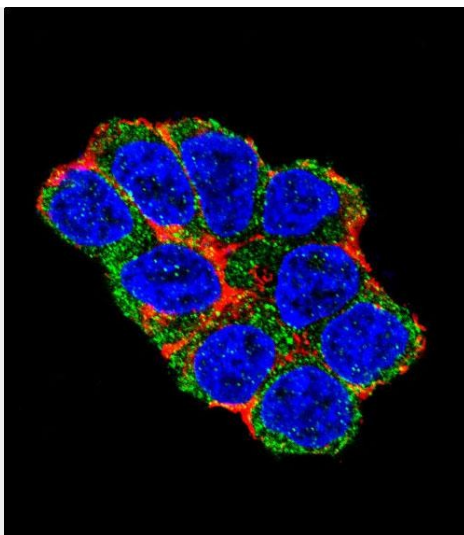
## SOX2 Antibody (Center) - Protocols

Provided below are standard protocols that you may find useful for product applications.

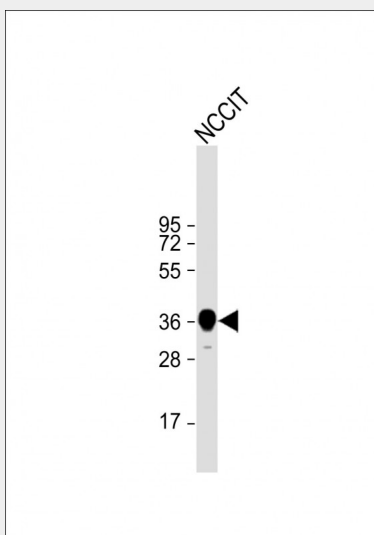
- [Western Blot](#)
- [Blocking Peptides](#)
- [Dot Blot](#)
- [Immunohistochemistry](#)
- [Immunofluorescence](#)
- [Immunoprecipitation](#)
- [Flow Cytometry](#)
- [Cell Culture](#)

## SOX2 Antibody (Center) - Images

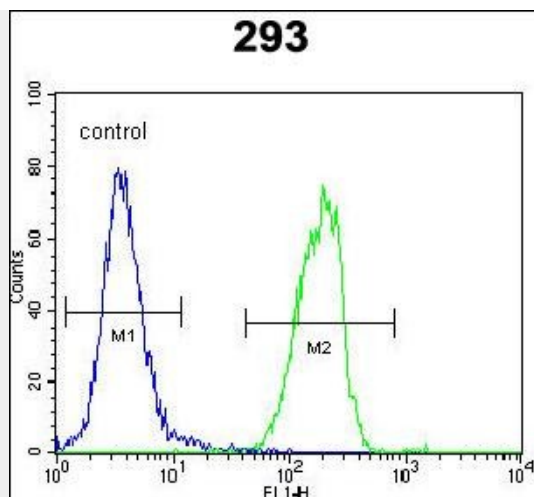




Confocal immunofluorescent analysis of SOX2 Antibody (Center)(Cat#AP2048c) with 293 cell followed by Alexa Fluor 488-conjugated goat anti-rabbit IgG (green). Actin filaments have been labeled with Alexa Fluor 555 phalloidin (red). DAPI was used to stain the cell nuclear (blue).



Anti-SOX2 Antibody (Center) at 1:4000 dilution + NCCIT whole cell lysate Lysates/proteins at 20  $\mu$ g per lane. Secondary Goat Anti-Rabbit IgG, (H+L), Peroxidase conjugated at 1/10000 dilution. Predicted band size : 34 kDa Blocking/Dilution buffer: 5% NFDM/TBST.



SOX2 Antibody (Center) (Cat. #AP2048c) flow cytometric analysis of 293 cells (right histogram) compared to a negative control cell (left histogram). FITC-conjugated goat-anti-rabbit secondary antibodies were used for the analysis.

#### **SOX2 Antibody (Center) - Background**

SOX2 is a member of the SRY-related HMG-box (SOX) family of transcription factors involved in the regulation of embryonic development and in the determination of cell fate. This protein may act as a transcriptional activator after forming a protein complex with other proteins. Mutations in the SOX2 gene have been associated with bilateral anophthalmia, a severe form of structural eye malformation.

#### **SOX2 Antibody (Center) - References**

- Remenyi, A., et al., Genes Dev. 17(16):2048-2059 (2003).
- Wiebe, M.S., et al., J. Biol. Chem. 278(20):17901-17911 (2003).
- Fantes, J., et al., Nat. Genet. 33(4):461-463 (2003).
- Schepers, G.E., et al., Dev. Cell 3(2):167-170 (2002).
- Kamachi, Y., et al., Trends Genet. 16(4):182-187 (2000).